

CORPVS MENSVRABILIS MVSICAE

61

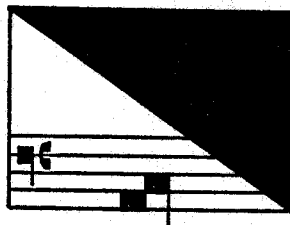
PHILIPPE ROGIER

# OPERA OMNIA

EDIDIT

LAVERN WAGNER

I



AMERICAN INSTITUTE OF MUSICOLOGY

1974



## CONTENTS

INTRODUCTION . . . . .	IX
Biography . . . . .	IX
Works . . . . .	XII
Notes . . . . .	XII
MUSIC	
<i>Missa Philippus Secundus Rex Hispaniae</i> . . . . .	1
<i>Missa Inclita stirps Jesse</i> . . . . .	28
<i>Missa Dirige gressus meos</i> . . . . .	56
<i>Missa Ego sum qui sum</i> . . . . .	88
<i>Missa Inclina Domine aurem tuam</i> . . . . .	131
The Motets:	
<i>Dirige gressus meos</i> by Créecquillon . . . . .	178
<i>Inclina Domine aurem tuam</i> by Morales . . . . .	186

# Missa. Philippus II, Rex Hispaniae

## Kyrie

CANTUS Ky - ri - e e - lei -

CONTRA- TENOR Ky - ri - e lei - son, Ky -

TENOR

BASSUS Ky - ri -

5 - son, (e - lei - son,) Ky - ri - e e - lei - son, (e - lei -

8 - ri - e e - lei - son, Ky - ri - e e - lei -

8 - e e - lei - son, Ky - ri - e e - lei -

10 - son,) Ky - ri - e e - lei - son, (e - lei - son,) Ky - ri - e

8 - son, Ky - ri - e e - lei - son, (Ky - ri - e e -

8 Phi - lip - pus se - cun -

8 - son, Ky - ri - e e - lei - son, (Ky - ri -

15 e - lei - son, Ky - ri - e e - lei -

8 - lei - son,) Ky - ri - e e -

8 - dus Rex Hi - spa - ni -

8 - e e - lei - son,) Ky - ri - e e -