

CORPUS OF EARLY KEYBOARD MUSIC

7

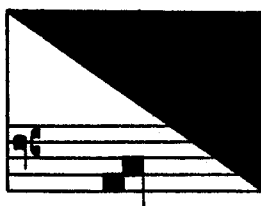
BERNARDO STORACE

SELVA DI VARIE COMPOSITIONI

D'INTAVOLATURA PER CIMBALO ED ORGANO

Edited by

BARTON HUDSON



1965

AMERICAN INSTITUTE OF MUSICOLOGY  
HÄNSSLER-VERLAG

69.070

## TABLE OF CONTENTS

FOREWORD	VII
FACSIMILES	
MUSIC	
1. Capriccio Sopra il Passo e Mezzo	1
2. Passo e Mezzo	11
3. Altro Passo e Mezzo	20
4. Romanesca	30
5. Aria sopra la Spagnoletta	37
6. Monica	43
7. Capriccio Sopra Ruggiero	49
8. Partite sopra il cinque Passi	53
9. Follia	59
10. Passagagli sopra A la mi re 1. <sup>a</sup> 2. <sup>a</sup> 3. <sup>a</sup> 4. <sup>a</sup> 5. <sup>a</sup> e 6. <sup>a</sup> Partita	65
11. Passagagli sopra C sol fa ut per $\flat$ 1. <sup>a</sup> 2. <sup>a</sup> 3. <sup>a</sup> Partita	76
*12. Passagagli sopra D sol re per $\sharp$ 1. <sup>a</sup> Partita e 2. <sup>a</sup> in modo Pastorale	85
Passagagli sopra A la mi re per $\sharp$ 1. <sup>a</sup> 2. <sup>a</sup> 3. <sup>a</sup> e 4. <sup>a</sup> Partita	
Passagagli sopra E la mi per $\sharp$ 1. <sup>a</sup> Partita e 2. <sup>a</sup> in modo Pastorale	
Passagagli sopra B mi prima, e seconda Partita	
*13. Passagagli sopra Fe fa ut per $\flat$	99
Passagagli sopra B fa $\flat$ mi per $\flat$	
Passagagli sopra B fa	
14. Ciaconna 1. <sup>a</sup> 2. <sup>a</sup> 3. <sup>a</sup> e 4. <sup>a</sup> Parte	107
15. Balletto P. <sup>mo</sup> S. <sup>do</sup> T. <sup>zo</sup> Q. <sup>to</sup> Q. <sup>to</sup> e S. <sup>to</sup>	117
16. Ballo della Battaglia	121
17. Corrente	124
18. Corrente	126
*19. Toccata	128
Canzon	
20. Toccata e Canzon	134
21. Recercar	139
22. Recercar di legature	145
23. Pastorale P. <sup>ma</sup> S. <sup>da</sup> T. <sup>za</sup> e quarta Parte	149

\*Numbers 12, 13, and 19 each include several large divisions which are listed separately in the original *Tavola*. However, since in each case the several divisions clearly belong together as one piece, each is assigned a single number in the present publication.

# 1. Capriccio sopra il passo e mezzo

Prima Parte

B. STORACE